

April 17, 2026

Japan System Techniques Co., Ltd.

Release of Version 2 of GAKUEN RX2.0 – The Next Step for the University Digital Transformation

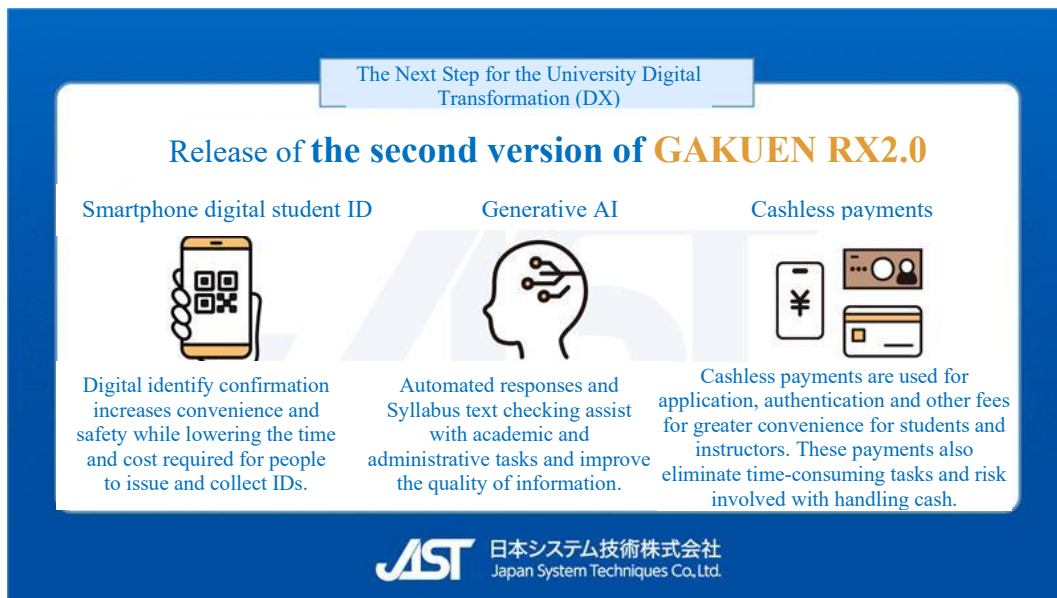
- Smartphone digital student IDs, cashless payments and generative AI take university procedures and data use to an even higher level -

Japan System Techniques Co., Ltd. (Head office: Kita-ku, Osaka; President and CEO: Taku Hirabayashi; JAST) started sales of the second version of GAKUEN RX2.0, which further upgrades the functions of this latest member of the GAKUEN Series, on March 31, 2026. This strategic university management system has the top market share ^{*1} in the university academic administration system category.

Since the release of the initial version of GAKUEN RX2.0 in November 2025^{*2}, JAST has revised the UI/UX, updated the system platform, and incorporated generative AI and other advanced technologies for constant upgrades to reflect changes in the business climate for universities.

*1. Source: “Education DX/ICT Solution Market Research 2025, Manufacturer/Vendor Share (FY2023 results/FY2024 forecast),” Fuji Chimera Research Institute, Inc.

*2. The GAKUEN Series Speeds Up the University DX Announcing the Newest Version: GAKUEN RX2.0 -More convenient UI and UX, at the forefront of university education-
[ir_notice20251201.pdf](#)



■ The need for a university DX that reflects decline in students and financial constraints

As Japan’s age-18 population falls, the business climate for university management is becoming more difficult due to heightened competition among universities to attract students. However, universities are benefiting from the new roles of higher learning in society. Two examples are lifelong learning, such as recurrent education and reskilling for business persons, and activities centered on knowledge to invigorate communities. To meet these needs, universities must switch to a sustainable operating model based on data and the DX while constantly upgrading the quality of education and support for students.

Currently, the DX at most universities is nothing more than the use of IT and digitalization in some activities. As a result, the DX at many universities is only a superficial program that fails to create meaningful changes in how universities operate and organizations are structured. Universities that face constraints in securing sufficient personnel and budgets find it particularly challenging to advance DX initiatives on their own.

The GAKUEN Series utilizes data assets built through its proprietary systems to help address a wide range of challenges in university operations and student life, spanning from enrollment through graduation. Version two of GAKUEN RX2.0 can solve numerous issues required for more convenience for students and a smaller volume of work for instructors and administrative personnel. For example, this new version adds capabilities for smartphone digital student IDs and cashless payments. In addition, version two facilitates a highly effective DX that includes a reexamination of all processes used for university operations and enables making decisions based on data.

■ Major new and upgraded functions of version two

(1) Smartphone digital student ID

Students can easily show their IDs by using a smartphone app. To reduce the risk of improper use of student IDs, biometric authentication improves security and time stamps are used for screen shots. Furthermore, the cost of issuing student IDs is lower and less time is needed for issuing student IDs and collecting IDs that are no longer valid.

Using these capabilities with JAST’s GAKUEN RX and UNIVERSAL PASSPORT RX total solution provides a platform for improving the student experience, including the issuance of electronic student IDs, and achieving education DX at universities. The goal is to help universities create sustainable campuses by linking services with social infrastructure and facilitating cardless operations.



Example of a GAKUEN RX2.0 screen

(2) Generative AI functions added in stages

Adding generative AI to UNIVERSAL PASSPORT RX results in even more support for university operations. Version two of GAKUEN RX2.0 has the following two new functions.

- [1] Automatic response service: Responses are produced in accordance with the relevant documents by inputting beforehand university rules, academic requirements and other information. Students can also receive answers for specific academic departments, classes and other items. The addition of this service will greatly reduce the time required for university employees to answer questions and requests.
- [2] Syllabus text check: Syllabus produces correct versions of documents by checking for mistaken or missing characters or letters, grammar mistakes, improper expressions and other errors. Using this checking capability raises syllabus accuracy and lowers the time needed for instructors to perform tasks outside the classroom.

(3) Cashless payments (internal university digital payment system)

Credit cards and QR/barcode payments can be used for all application, certificate issuance and other fees. Payment methods can be selected based on the methods used by each university. Offering a broad range of options for payment makes various procedures more efficient. Furthermore, eliminating the use of cash reduces the amount of work for university personnel as well as the risk of clerical errors.

(4) Compatible with Learning Tools Interoperability (LTI)*3

Integration of students’ academic activities with a portal is possible by using UNIVERSAL PASSPORT RX for LTI linkage. The second version of GAKUEN RX2.0 allows moving to Zoom and EDX UniText with a single click. As a result, students can continue their studies with no interruption because there is no need to stop the learning process. In addition, JAST plans to add links with a Learning Management System (LMS)*4 and other external systems.

(5) Web applications for instructors

GAKUEN RX2.0 processes applications from students and guardians as in the initial version and is newly capable of handling applications from instructors too. Adding this capability makes procedures more efficient by consolidating tasks for all applications at a university in the portal.

(6) Expansion of functions for university operations

In response to requests from users, version two of GAKUEN RX2.0 has a broader range of functions. The system is now capable of managing online courses (inclusion in the limit on the number of courses taken at once) and performing GPA calculations (functional GPA) based on raw grades. These new functions provide more flexibility to match a university’s distinctive operations.

*3. LTI is a technology standard that facilitates the interconnection of remote learning tools, electronic textbooks and many other academic ICT tools.

*4. LMS is an IT tool for the management of educational materials and academic progress involving e-learning.

■ Upcoming activities




JAST plans to add multi-factor authentication, a tuition payment service and many more functions as well as upgrades. These advances will even better support the DX activities of universities with respect to both functions and data.

The GAKUEN Series uses digital technologies to provide many points of contact with students, including enrollment procedures, various forms of assistance and the use of university services. Comprehensive visualization is possible for information that was previously separate for individual departments. This improves business processes throughout an organization and supports more advanced data-based decisions.

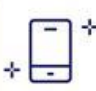





JAST will continue to use the GAKUEN Series to support the consistent creation of value by universities by serving as a DX partner for university management, academic and student support innovations rather than simply a provider of IT systems.

Schedule

Initial version November 2025

 <p>New smartphone screen design Major design revisions simplify and speed up operations using smartphones</p>	 <p>Easier LMS operations The screen is designed for easier use by instructors</p>	 <p>24-hour use The new system can be used at any time of the day or night.</p>
--	--	---

Second steps March 2026 (Second version)

 <p>Smartphone digital student ID Allows using digital versions of ID cards</p>	 <p>Generative AI AI functions make tasks more efficient and provide assistance</p>	 <p>Many payment methods ID card issuing units, web applications and digital ID cards can be used for payments using the internet</p>
 <p>LTI compatibility Linkage and scalability with many services</p>	 <p>Web applications for instructors too Web applications are possible for students and their guardians as well as for instructors</p>	 <p>Expansion of functions for university operations Realization of user-requested features, including remote class management and a functional GPA system</p>

*JAST plans to add some of these functions in March and others in April.

Third steps To be determined (under development)



*Planned functions may change because this list includes functions still under development.

■ The GAKUEN Series

JAST's GAKUEN Series is a strategic university management system that provides comprehensive support for administrative and educational activities. Sales started in October 1994 and more than 450 universities and junior colleges in Japan have adopted this system, where it provides benefits for instructors and other university personnel as well as students and their parents and other guardians.



The GAKUEN Series consists of GAKUEN RX, which is an administrative system, and UNIVERSAL PASSPORT RX, which is a portal system. Together, these systems provide comprehensive support for university operations and the activities of students that extend from when students start their studies until they graduate.

GAKUEN RX2.0 website: <https://www.jast-gakuen.com/>

■ About JAST



日本システム技術株式会社
Japan System Techniques Co., Ltd.

JAST is an IT company that has no affiliations with other corporate groups. Business activities encompass education, healthcare, finance, telecommunications, the public sector and many other social infrastructure categories. Guided by the philosophy that “refining and upgrading the skills of people comes first ahead of everything else,” JAST has many programs for the advancement of employees. JAST builds relationships with customers based on trust by working closely with customers while providing one-stop support extending from defining requirements to the provision of maintenance services. JAST has two enterprise resource planning packages: the GAKUEN series, an integration package system for universities, and the BankNeo, an information integration package for financial institutions. There is also a medical big data business for one-stop support for health insurers. This includes the JMICS, an automatic inspection system for health insurance claims, and the iBss, an insurers business support system for the digital transformation of insurance administrative processes.

Company: Japan System Techniques Co., Ltd.
Representative: Taku Hirabayashi, President and CEO
Tokyo head office: Taiyo Seimei Shinagawa Building 27F, 16-2 Konan 2-chome, Minato-ku, Tokyo
Osaka head office: Nakanoshima Festival Tower 29F, 3-18 Nakanoshima 2-chome, Kita-ku, Osaka
Established: March 26, 1973
Capital: 1,535 million yen
Employees: Consolidated 1,679 (as of September 30, 2025);
Non-consolidated 1,230 (as of September 30, 2025)
Fiscal year end: March
URL: <https://www.jast.jp/en/>

■ Inquiries

Japan System Techniques Co., Ltd.
Contact: Tanaka
Educational Division
TEL: +81-3-6718-2790
Mail: gakuen-contact@jast.co.jp
URL: <https://www.jast-gakuen.com/>

■ Press Inquiries

Japan System Techniques Co., Ltd.
Contact: Yamashita/Ishida
Management Planning Department
TEL: +81-3-6718-2771
Mail: press@jast.co.jp
URL: <https://www.jast.jp/en/>